

PARTS

(1) Hardware

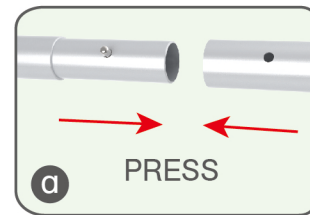
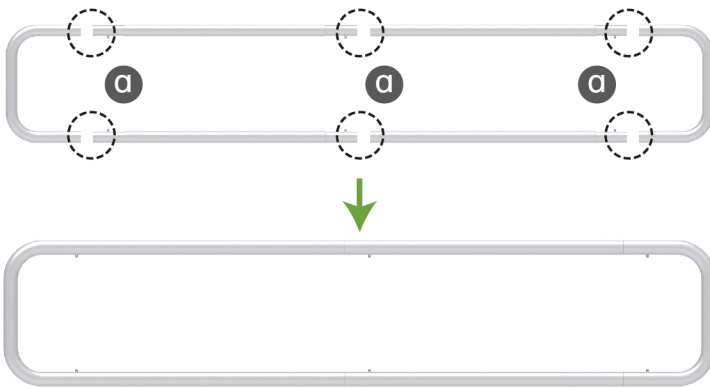


(2) Graphic printing fabric banner



STEP 01

To connect the poles according to the labellings

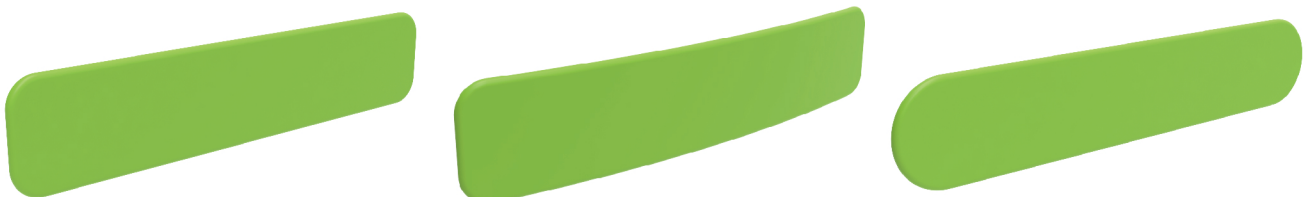


STEP 02

To wrap up the fabric banner from side to side and zip up

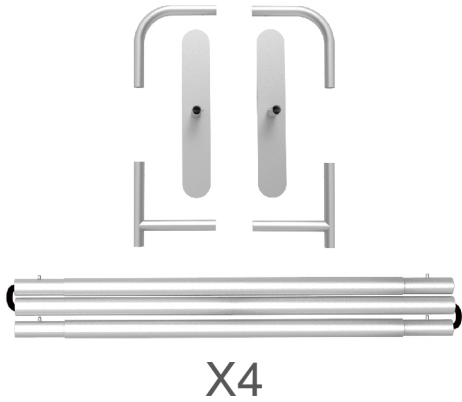


Same steps for below style of headers



PARTS

(1) Hardware

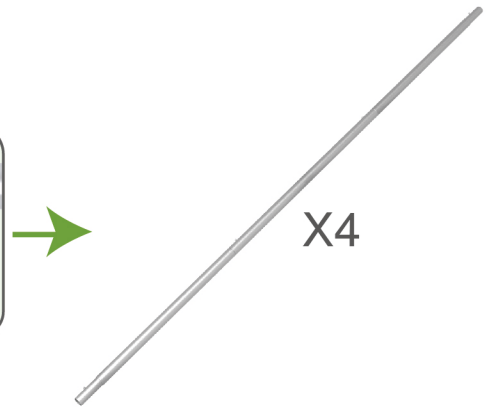
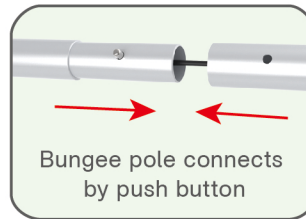
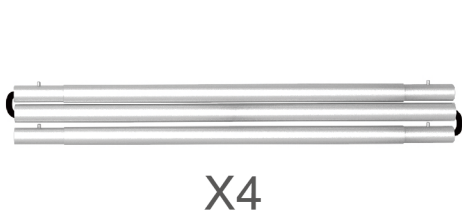


(2) Graphic printing fabric banner



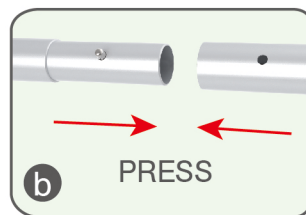
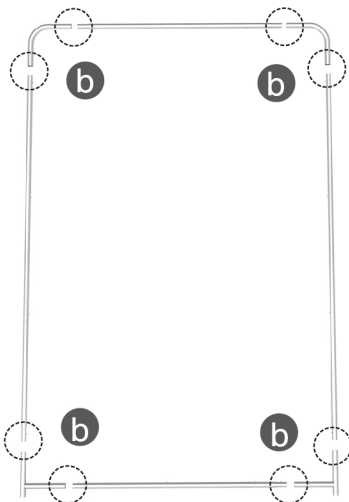
STEP 01

To connect the poles according to the labellings



STEP 02

To connect the long poles by corner pieces according to labellings



PARTS

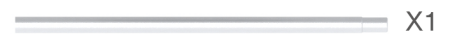
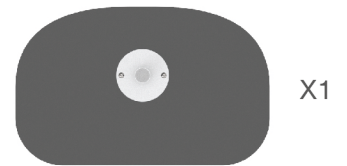
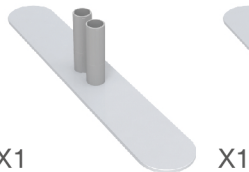
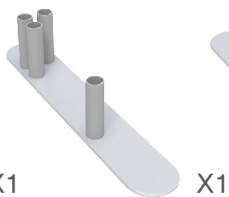
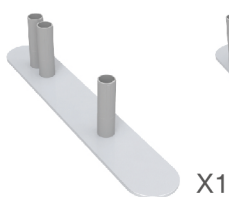
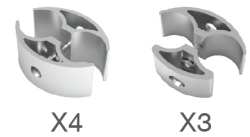
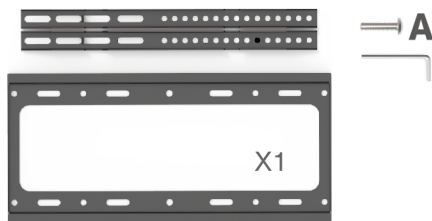
STEP 03

To slide the fabric banner on the frame from top and zip up at bottom



Same Steps for another Display Wall

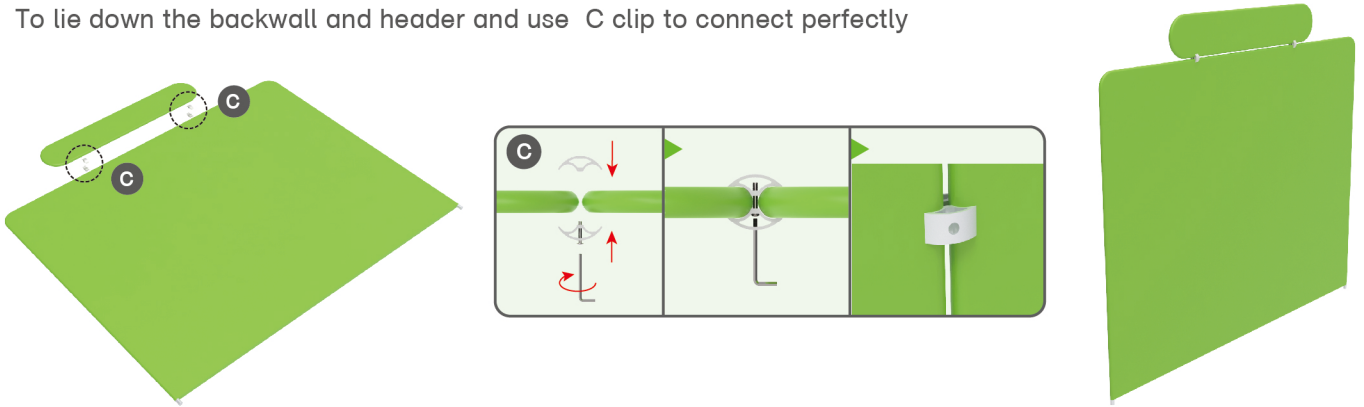
Booth Set Assembly



PARTS

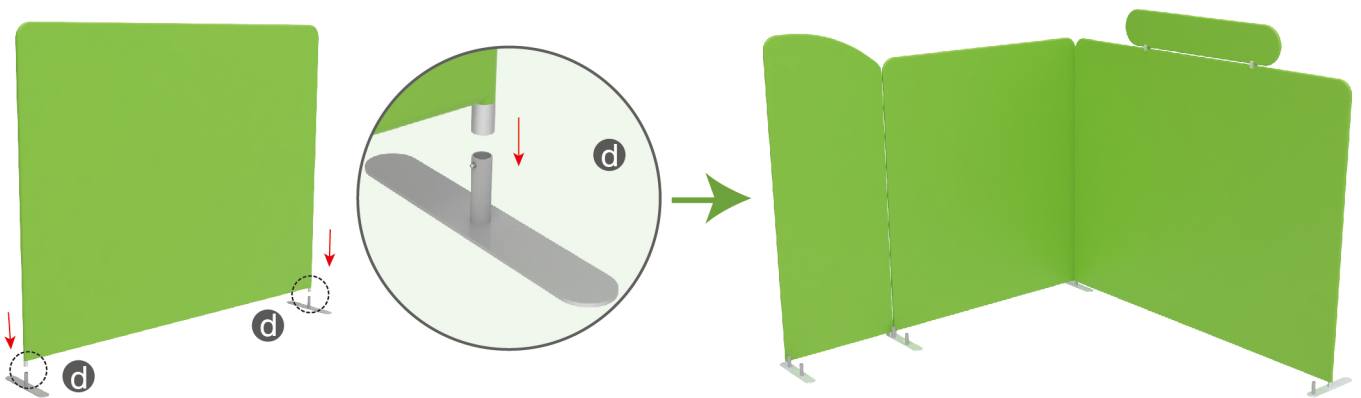
STEP 01

To lie down the backwall and header and use C clip to connect perfectly



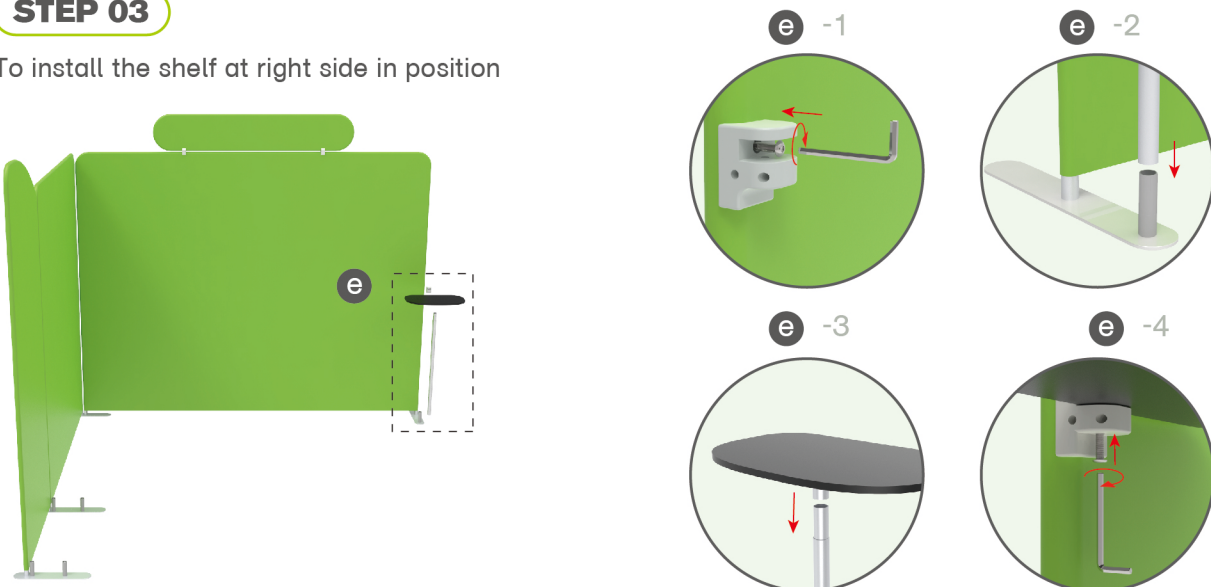
STEP 02

To assemble the stand feet in position



STEP 03

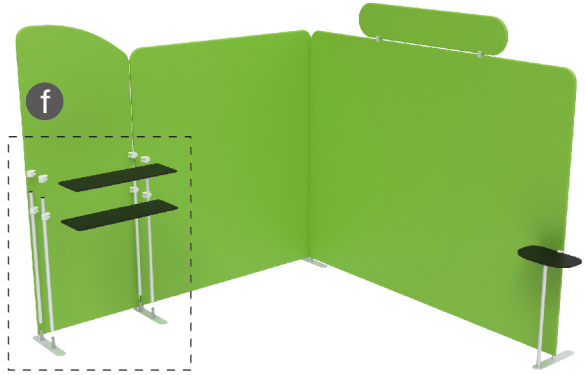
To install the shelf at right side in position



PARTS

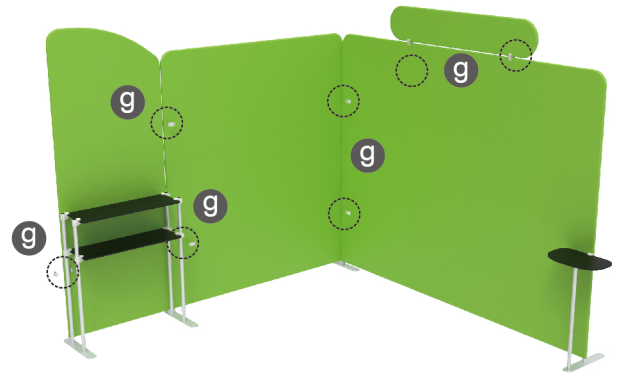
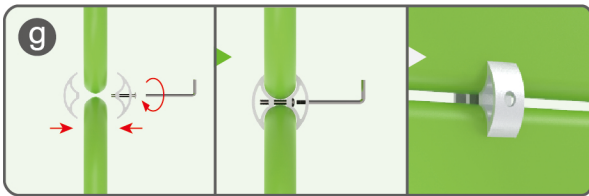
STEP 04

To install the shelves at left side in position



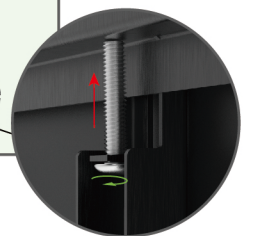
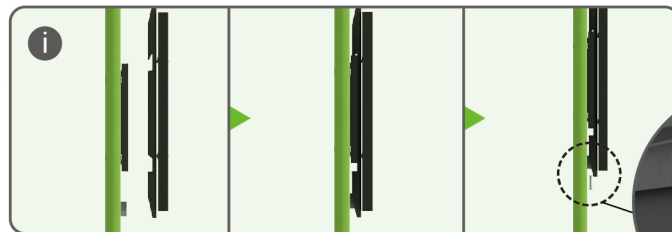
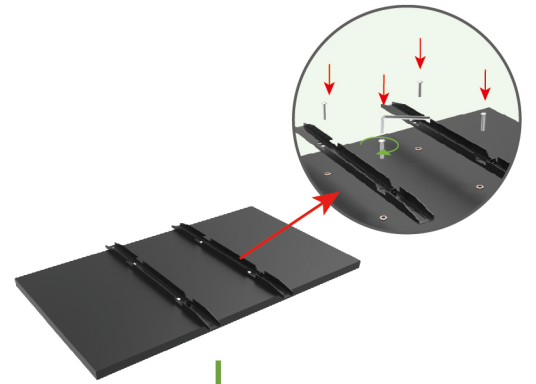
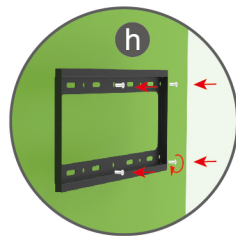
STEP 05

To use C clip to connect display walls perfectly
** C clip with both sides same size is for flat connection
** C clip with 1 big 1 small is for corner connection



STEP 06

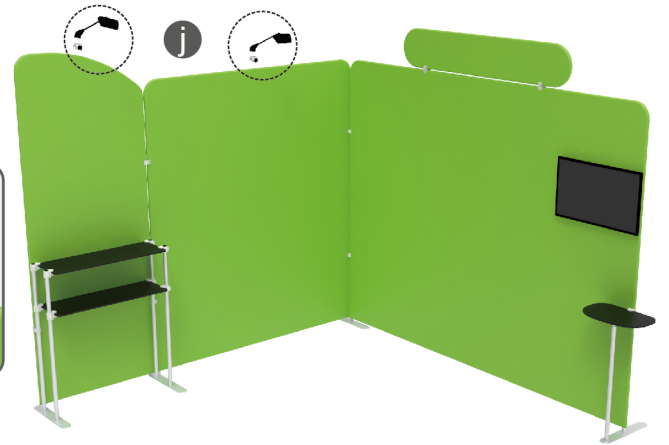
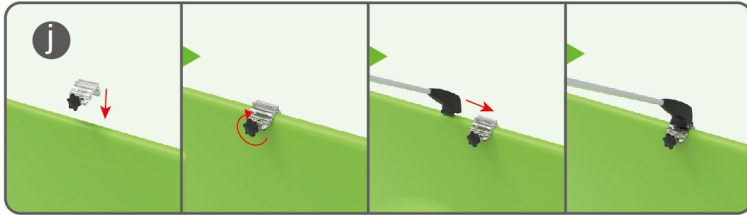
To install the TV mount in position



PARTS

STEP 07

Install LED light



SAME STEPS FOR 10X10ft Booth-U



10X10FT-BOOTH-T



10X10FT-BOOTH-U